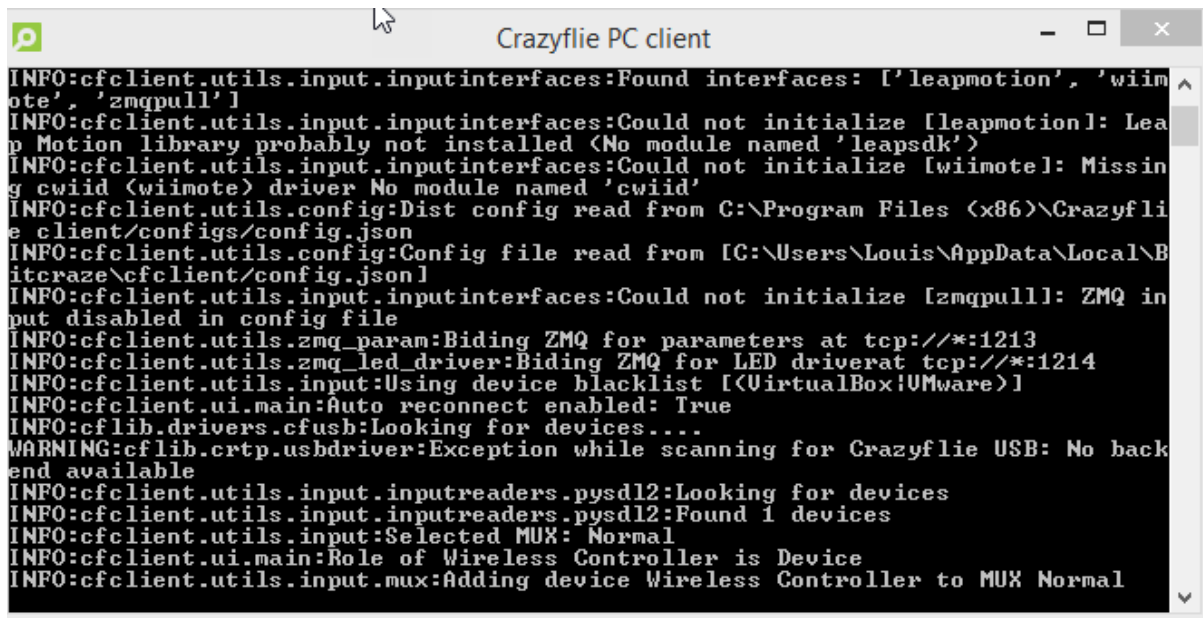
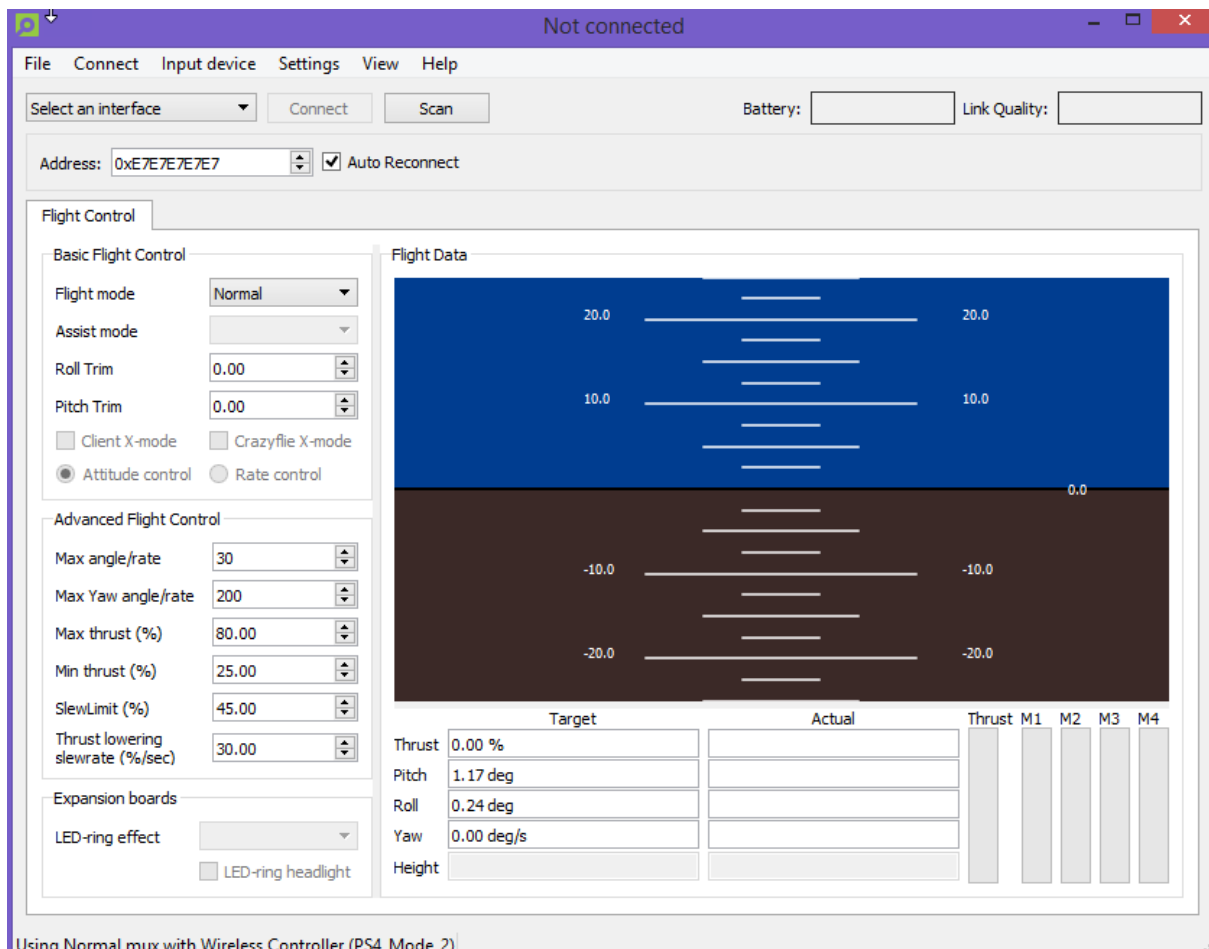


## CRAZYFLIE 2.0 INSTALLATION PROBLEMS: RADIO not found



The screenshot shows a terminal window titled "Crazyflie PC client". The terminal displays a series of log messages from the Crazyflie software. The messages indicate that the program found interfaces for 'leapmotion', 'wiimote', and 'zmqpull'. It then attempts to initialize these interfaces, but fails for 'leapmotion' (missing 'leapsdk' module) and 'wiimote' (missing 'cwiid' module). The program then reads configuration files from the C:\Program Files (x86)\Crazyflie client\configs\config.json and C:\Users\Louis\AppData\Local\Bittoraze\cfclient\config.json. It then attempts to initialize 'zmqpull' but fails because ZMQ is disabled in the config file. The program then binds ZMQ for parameters at tcp://\*:1213 and for the LED driver at tcp://\*:1214. It then uses a device blacklist for VirtualBox/UMware. The program then enables auto-reconnect and looks for devices. A warning is shown for the USB driver: "Exception while scanning for Crazyflie USB: No backend available". Finally, it looks for devices using pysdl2, finds 1 device, selects the MUX as Normal, and adds the device to the MUX.

```
INFO:cfclient.utils.input.inputinterfaces:Found interfaces: ['leapmotion', 'wiimote', 'zmqpull']
INFO:cfclient.utils.input.inputinterfaces:Could not initialize [leapmotion]: Leap Motion library probably not installed (No module named 'leapsdk')
INFO:cfclient.utils.input.inputinterfaces:Could not initialize [wiimote]: Missing cwiid (wiimote) driver No module named 'cwiid'
INFO:cfclient.utils.config:Dist config read from C:\Program Files (x86)\Crazyflie client\configs\config.json
INFO:cfclient.utils.config:Config file read from [C:\Users\Louis\AppData\Local\Bittoraze\cfclient\config.json]
INFO:cfclient.utils.input.inputinterfaces:Could not initialize [zmqpull]: ZMQ input disabled in config file
INFO:cfclient.utils.zmq_param:Biding ZMQ for parameters at tcp://*:1213
INFO:cfclient.utils.zmq_led_driver:Biding ZMQ for LED driverat tcp://*:1214
INFO:cfclient.utils.input:Using device blacklist [(VirtualBox!UMware)]
INFO:cfclient.ui.main:Auto reconnect enabled: True
INFO:cfclient.drivers.cfusb:Looking for devices....
WARNING:cfclient.crtp.usbdriver:Exception while scanning for Crazyflie USB: No backend available
INFO:cfclient.utils.input.inputreaders.pysdl2:Looking for devices
INFO:cfclient.utils.input.inputreaders.pysdl2:Found 1 devices
INFO:cfclient.utils.input:Selected MUX: Normal
INFO:cfclient.ui.main:Role of Wireless Controller is Device
INFO:cfclient.utils.input.mux:Adding device Wireless Controller to MUX Normal
```



SCANNING

